

## Special Points of Interest:

- **UMW Minutes from February Meeting**
- **March Calendar with Birthdays and Anniversaries**
- **Food @ Faith March 17**
- **One Great Hour of Sharing Special Sunday—March 18**
- **April Newsletter & Calendar deadline—March 20**

## “First, Unclench Your Fists”

*The hardest part of praying is letting go of our resentments, bitterness, and anger --and that means not holding back from God.*  
~~ BY: Henri Nouwen

Praying is no easy matter. It demands a relationship in which you allow someone other than yourself to enter into the very center of your person, to see there what you would rather leave in darkness, and to touch there what you would rather leave untouched. Why would you really want to do that? Perhaps you would let the other cross your inner threshold to see something or to touch something, but to allow the other into that place where your most intimate life is shaped—that is dangerous and calls for defense.

The resistance to praying is like the resistance of tightly clenched fists. This image shows a tension, a desire to cling tightly to yourself, a greediness which betrays fear.

A story about an elderly woman brought to a psychiatric center exemplifies this attitude. She was wild, swinging at everything in sight, and frightening everyone so much that the doctors had to take everything away from her. But there was one small coin which she gripped in her fist and would not give up. In fact, it took two people to pry open that clenched hand. It was as though she would lose her very self along with the

coin. If they deprived her of that last possession, she would have nothing more and be nothing more. That was her fear.

When you are invited to pray, you are asked to open your tightly clenched fist and give up your last coin.

But who wants to do that? A first prayer, therefore, is often a painful prayer because you discover you don't want to let go.

You hold fast to what is familiar, even if you aren't proud of it. You find yourself saying: "That's just how it is with me. I would like it to be different, but it can't be now. That's just the way it is and this is the way I'll have to leave it." Once you talk like that, you've already given up believing that your life might be otherwise.

You've already let the hope for a new life float by. Since you wouldn't dare to put a question mark after a bit of your own experience with all its attachments, you have wrapped yourself up in the destiny of facts. You feel it is safer to cling to a sorry past than to trust in a new future. So you fill your hands with small, clammy coins which you don't want to surrender.

You still feel bitter because people weren't grateful for something you gave them: you still feel jealous of those who are better paid than you are;

*(FISTS Continued on Page 2...)*





“You live through it, you live along with it ...”



(... FISTS Continued from Page 1)

you still want to take revenge on someone who didn't respect you; you are still disappointed that you've received no letter, still angry because someone didn't smile when you walked by.

You live through it, you live along with it as though it doesn't really bother you...until the moment when you want to pray. Then everything returns: the bitterness, the hate, the jealousy, the disappointment, and the desire for revenge. But these feelings are not just there; you clutch them in your hands as if they were treasures you don't want to let go. You sit wallowing in all that old sourness as if you couldn't do without them, as if, in giving them up, you would lose your very self.

Detachment is often understood as letting loose of what is attractive. But it sometimes also requires letting go of what is repulsive. You can indeed become attached to dark forces such as resentment and hatred. As long as you seek retaliation, you cling to your own past. Sometimes it seems as though you might lose yourself along with your revenge and hate—so you stand there with balled-up fists, closed to the other who wants to heal you.

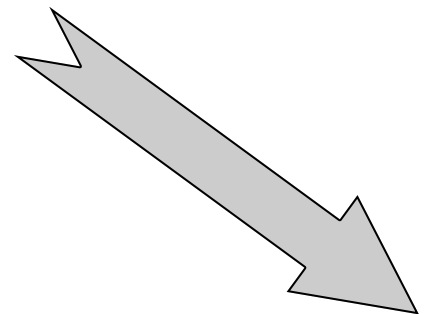
Let us use this season of Lent to unclench that which we hold on to that is now God.

Let us let the Holy Spirit open our hearts and hands to receive all that God has for us and desires us to

be in Christ.

On the next page, in the box, is a centering prayer. I invite you to take some time during Lent and share this journey.

~~ Pastor Victor Waters



**Folding Chairs**  
**for Sale**

40 of the metal folding chairs in Fellowship Hall are for sale. Cost is \$5 each. Please let Bob Stephan (461-3482) or Neil Fruechte (835-7006) know if you are interested in buying one, some, or many!



**Remember to turn off the lights and lock the doors when you leave!**  
**Stop! Think! Lock!**

## Faith Mission Moment

Sandy Voshell, Cindy Saufferer, and Don & Char Frankenberry went to Prince of Peace Church in Burnsville on Thursday, Feb 9, to help Feed My Starving Children.

They were among a group of about 250, that packaged 72,360 packets of food. Each packet of food contained chicken flavoring, dried vegetables, a cup of soy product (protein) and a cup of rice.

Each packet had to be weighed before sealing. After sealing, cardboard boxes were packed—36 packets per box to be sent on their way. The 72,360 packets of food that were made up that morning were enough to feed 198 children, one packet a day, for one year!

Interested in helping? Let Char or Pastor Victor know.

## THANK YOU'S

Thank you for your prayers and cards at the time of my brother, Bob's, death. All are greatly appreciated!

~~ Norma Buland and family

## An Exercise in Prayer

Let us begin this journey together with....**AN EXERCISE IN PRAYER.** A centering prayer helps us focus on Jesus: **"Jesus Christ, Son of God, have mercy on me."**

### **DAY 1**

(Genesis 32:22-32)

"Wresting With God"

Where in your life are you wrestling with God or have wrestled with God? How has wrestling with God affected your view of Him?

### **DAY 2**

(Genesis 18:20-33)

"Bargaining with God"

When have you "bargained" with God? Did you keep your end of the bargain— why or why not? Did God keep His? What does this passage tell you about God and Abraham's relationship?

### **DAY 3**

(I Samuel 1 :1-18)

"Pouring out Your Heart to God"

When have you poured out your heart to God? How did he answer you? How did He answer Hannah?

### **DAY 4**

(Daniel 2:20-23)

"Blessing God"

What has God done for you that you can bless him for?

### **DAY 5**

(Psalm 51)

"Keeping Short Accounts"

Pray this Psalm back to God in your own words.

### **DAY 6**

(Luke 1:46-55)

"Mary's Song"

What is the song that God has given you to sing?

### **DAY 7**

(Colossians 1:15-20)

"Jesus"

Thank Jesus for who he is and what He has done for you.

## 1st Annual Chili Cook-off



**WHEN:** March 18, 2012

**10:30 a.m. (following Worship)**

**WHO:** All chili makers at Faith UMC and friends.

**HOW:** Bring your pot of chili to church and the congregation will sample different ones to see which is the best. They will vote by putting money into jars, which will be placed in front of the various pots of chili.

**Who Wins?** The one with the most money in the jar!

All money collected will be donated to our National UMC Mission Project—Emma Norton Services. Please bring paper products too for Emma Norton—paper towels, toilet paper, napkins, you name it.

**NOTE:**

- Extra condiments (i.e. shredded cheese, hot sauce, sour cream, etc.) will NOT be provided.
- Milk, coffee, water and crackers WILL BE provided.



## One Great Hour of Sharing

People from various communities were already assembled, eagerly waiting, when the UMCOR delegation finally reached remote Mutumbami, Zimbabwe. Today the children would take home school supplies from UMCOR's Sager Brown depot.

As the contents of the kits were announced, the eager crowd reacted with smiles and clapping to receive: notebooks, scissors, an eraser, a ruler, crayons, and pencils (LOUD CHEERS!!!). "Never have I seen such excitement about six pencils!" said UMCOR's Melissa Crutchfield, moved to find something so commonplace in her homeland was so prized in this struggling community.

This year marks UMCOR Sager Brown's twentieth anniversary of bringing joy and hope in the form of relief kits to communities around the world - whether school supplies to children in Africa eager to study, or cleaning buckets to families in the United States mucking out their homes after a hurri-

cane, flood or tornado.

### God's Steadfast Love

So much of what UMCOR does is about revealing God's steadfast love for humankind. For more than 70 years, UMCOR has brought hope and solidarity to communities at home and abroad in the wake of disaster, and support and expertise to those on a path to development. UMCOR's relief-supply ministry is part of those efforts, gathering the goodwill of selfless volunteers to assemble much-needed relief kits and cleaning buckets to ship to those seeking to become self-sufficient or to rebuild lives and communities following an emergency.

### ONE GREAT HOUR OF SHARING

Join United Methodist's everywhere by participating in the special offering that supports UMCOR's vital work. **Your gifts to One Great Hour of Sharing lay the foundation for UMCOR to manifest God's steadfast love throughout the world.**

**Please Give Generously!**

**"God's Steadfast Love"**





## Be a Hero—Help Fight Hunger

**March is Minnesota Food Share Month.**

There are two ways that you can be a hero this month.

1. The grocery cart will be in the Narthex each Sunday in March. Let's fill it with non-perishable food items, paper products, personal hygiene items and cleaning products each week!
2. You can also make a cash donation - it's easier to collect and deliver - so that the food shelf has the money to buy fresh produce, meat and dairy products when it needs them.

The food shelf can stretch cash donations further because of their access to discount products and programs. If you are donating money, please write on your check memo "Neighborhood Service Center Food Shelf".

Remember that in March our donations are matched pound by pound and dollar for dollar.

**"Let's  
work  
together  
and be  
Heroes!"**



## 2012 Easter Lilies & Tulips Order Form



Please place your order using this form. Payment is due upon order.  
**Deadline to order is Thursday, March 22, 2012**

**Lily - \$7.75 per potted plant.**

**Tulip - \$9 per potted plant.**

\*\* Flowers will be delivered to the church on April 5 and will be available for pick-up after Easter Worship on Sunday, April 8.\*\*

ITEM	QUANTITY	PRICE EACH	TOTAL PRICE
Lily		\$7.75	\$
Tulip		\$9.00	
		<b>TOTAL DUE</b>	<b>\$</b>

**Your Name (as you would like it to appear in the Newsletter and Bulletin):**

\_\_\_\_\_

**In Memory of:** \_\_\_\_\_

**In Memory of:** \_\_\_\_\_

**In Memory of:** \_\_\_\_\_

*OFFICE Only:*  
Paid on \_\_\_\_\_, in amount of \$ \_\_\_\_\_. Cash / Check # \_\_\_\_\_. Ordered



Circles are one of the small group opportunities available at Faith where Bible Study, Devotions and Prayer are shared.

### Elizabeth Circle

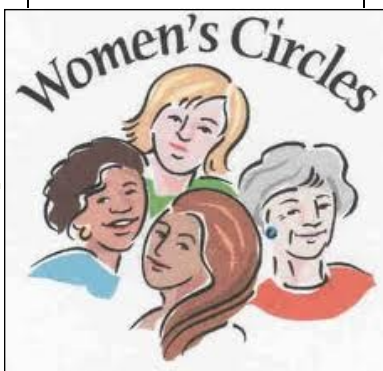
Elizabeth Circle will not have their regular meeting in March. The Circle will, however, serve refreshments after the Lenten Service on March 21.

### Ruth Circle

Ruth Circle will meet on March 23, at 9:30 a.m. at the home of Margaret Hasslen.

### Mary Circle

Mary Circle will meet on Tuesday, March 20 at 2 p.m. in the Upper Room. Hostess is Lorraine Wick. Devotions will be led by Janet Jones.



## United Methodist Women NEWS

The United Methodist Women calendar is busy this spring! Following are dates to put on your calendar. There will be more information coming, so watch for posters and Roberta will be sharing information at the Circle meetings.

**March 11**—March is Minnesota Food Share Month. Cindy Coy from the Waseca Area Neighborhood Service Center will give a brief presentation during worship.

**March 18**—MISSION SUNDAY and the 1st ANNUAL CHILI COOK-OFF!

Mark your calendars now... Instead of the mission jars as we have done in the past, we are having a Chili Cook-off. Please let Char Frankenberg (833-7489) know if you are planning to bring a pot of chili and compete. Jars to collect "votes" will be on the tables in front of the pots of chili. You vote by placing money in the jar—and the one with the most wins! NOTE: All proceeds will be

given to Emma Norton Services.

**April 11**—Spring Luncheon! The sandwiches and salad are always very tasty and there will be a wonderful selection of cakes! Invite a friend and enjoy a relaxing lunch together in our Fellowship Hall.

**April 28**—Women's Retreat. The Women's Retreat this year is going to be great! Our main presenter for the day is Ruth Wiertzema and her presentation is titled, "Doll Party". It's going to be a fun day filled with a meaningful message, food and fellowship. Everyone is encouraged to bring a friend!

**April 21**—Southern Prairie Spring Gathering will be held in Madelia. We would love to see a good representation, so please let Roberta know if you are interested in going!

Consider joining a Circle. If an evening meeting works better for you—please call Edy Barber or Roberta Walker to discuss.



## NURSES NOTES: Smelling Your Way to Feeling Better

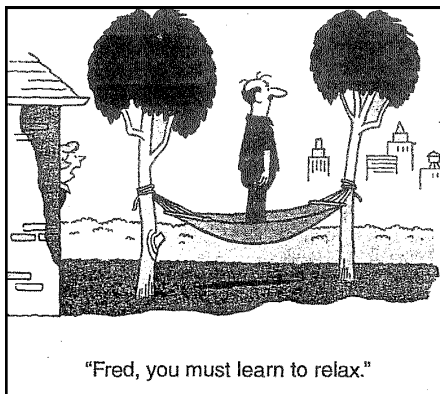
The sense of smell may be more important than you think. Some of our fondest memories come immediately back to us when we smell that smell again... For example: the smell of bread baking, garden flowers, fresh cut hay, air after a rain. On the other hand, have you ever experienced smelling salts?!

**Aromatherapy** is a complementary medicine, involving the “therapeutic use of essential oils from plants (flowers, herbs or trees) for the improvement of physical, emotional, and spiritual well-being.” They are used in the U.S. via inhaling and applying to the skin. When something gives off a scent, or odor, certain molecules of that lotion or oil are literally reaching the brains emotional center, called the limbic system, and triggering various physiological responses. Skilled application of certain “aromatic oils may exert antibacterial, anti-inflammatory, and analgesic (pain relieving) effects.”

At the Mayo Clinic, aromatherapy is used to relieve nausea and vomiting in cancer patients. It also is used for stress and anxiety treatments. The only downside is a possible allergic reaction to a particular oil on the skin.

A few of the aroma’s used include: lavender, chamomile, marjoram, rosemary, peppermint and eucalyptus. Here’s a tip: when planting flowers at the entrance to your house, consider lavender, it’s smell causes a sense of calm and peace.

Scriptures refer to the use of oils in the birth and death of Jesus. Additional examples include: “Is anyone of you sick? He should call the elders of the church to pray over him and anoint him with oil in the name of the Lord.” (James 5:14) “Perfume and incense bring joy to the heart, and the pleasantness of one’s friend springs from his earnest counsel (Proverbs 27:19)



Be careful about using fragrances around others; what might be appealing to you, may be noxious to, or cause an allergic reaction in, another. The use of perfumed candles is an example. When in doubt—play it safe and go without.

Peace and Grace—

*Sherry Scholljegerdes, RN, PN*

*Reference material: Aromatherapy and Essential Oils Professional Version, National Cancer Institute (last modified 1/11/2012).*

### Prayer Shawl Ministry

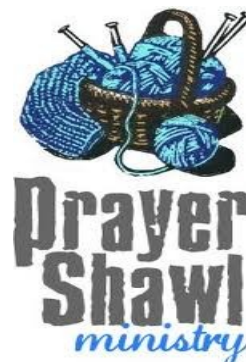
**Check Out:**

[www.shawlministry.com](http://www.shawlministry.com)

“Prayer Shawls have been made for centuries. They are a way to enfold, comfort, cover, wrap, give solace and warmth, mother, hug, shelter and beautify. Moreover, they are symbolic of inclusive and unconditional love!” (*Parish Nurse Handbook, Concordia College*)

If you are interested in this ministry, individually or as a group, please call the church office, or Sherry S. at 835-4304, and sign up. Individuals and groups are welcome! If you know someone who would benefit from receiving a shawl, please let Sherry or Pastor Victor know.

THANK YOU to those of you who already participate in this ministry!



## Lord! Please hear our prayer...

Cedarview Care Center—Elaine Flathers

Colony Court—Rosalind Peterson & Mable Long

Colony Court Memory Suites—Anna Swenson

Lake Shore Inn— Elvira Blowers, Florence Gutknecht, Hazel Henskensiefken, Eleanor Jane Hutchison

Latham Place—Jean Ferry

Morrow Home, Sparta, WI— Marlene Rietfort

Shorewood Sr. Campus, Roch—Darlene Lynch

Those who are ill or injured: Willie Mahler, Marilyn Possin, Bob Mackey, and Gloria & Ray Pommerenke during their time of transition.

- *Please remember our family and friends in Military Service.*
- *Remember our Snow Bird friends and family as they travel.*



## News about our Faith Family

- Brianna Peterson, daughter of Caleb & Emily (Keller) Peterson, of Cloquet, MN, was baptized during a private evening ceremony at Faith UMC in December 2011.
  - Jozy Schlaak, daughter of Daniel & Joy (Esse) Schlaak of Waseca, MN, was baptized during Worship at Faith UMC on February 19, 2012. Her parents are considering joining our membership.
- Shirley Hansen became a professing member of our Faith congregation during worship on February 19, 2012.
- Mable Long moved to Colony Court and continues to recover after her broken hip earlier in the fall of 2011.
- We are looking for current addresses for: Jennifer Thomas, Jennifer Mackey, Brenden Wright, and Jacob & Rachael Bluhm. Can you help?
- Are you (or a member of your family) away at college? Please give us a seasonal address and we can stay in touch via devotionals and the newsletter!
- Leaving town for a while? We would like to know so we don't get returned mail...
- Please update the Church Office with your news! We love to hear from you.





# Thank you for your Gifts!

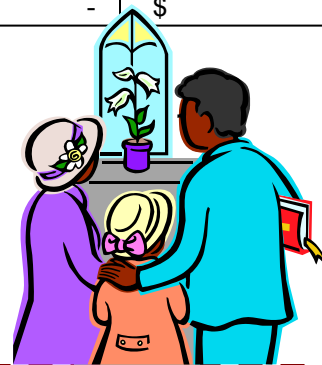
ATTENDANCE	February 5, 2012	February 12, 2012	February 19, 2012
<i>Sunday</i>	78	79	99
<b>Sunday School (TOTAL)</b>	7	8	6
<i>Children</i>	5	8	6
<i>Shepherds</i>		0	0
<i>Teachers</i>	2	2	1
<b>FINANCIAL</b>			
FINANCIAL	February 5, 2012	February 12, 2012	February 19, 2012
<b>General Budget</b>	\$ 6,599.35	\$ 456.30	\$ 1,039.00
<b>Sunday School</b>	\$ -	\$ 9.00	\$ -
<b>Apportionment 2012</b>	\$ 174.00	\$ -	\$ 7.00
<b>Crisis Fund</b>	\$ 57.00	\$ -	\$ -
<b>Special Sunday Offering</b>	\$ -	\$ 2.00	\$ -
<b>UMCOR</b>	\$ 50.00	\$ -	\$ -
<b>UMYF</b>	\$ -	\$ 70.00	\$ -
<b>Building</b>	\$ 1,518.00	\$ 11.40	\$ 159.00
<b>CIF</b>	\$ 126.00	\$ 2.30	\$ 42.00
<b>Memorial - Building</b>	\$ -	\$ -	\$ 50.00
<b>Memorial - Other</b>	\$ 28.00	\$ -	\$ -
<b>Other</b>	\$ 9.50	\$ -	\$ -

## Spouse/Significant Other Loss Support Group

Owatonna Area Hospice is hosting a Spouse/Significant Other Loss Support Group beginning Wednesday, March 21, 2012. The group will meet every Wednesday for six weeks—March 21, 28, April 4, 11, 18 and 25, from 6—7:30 p.m. at Homestead House in Owatonna (2350 NW 26th Street).

The death does not need to be connected to hospice care in order for an individual to participate. Hospice recommends that a minimum of 3 months has passed since the partner's death. It is not a drop-in group, so individuals who cannot participate in all of the sessions are encouraged to wait until the next offering.

Please RSVP to Brenda Jirik, Bereavement Coordinator (507) 977-2857 by March 14.



## Lent Bible Study

Join Pastor Waters for a Lenten Bible Study of the "Book of Mark— Exploring the Life of Christ as Told in the First Gospel".

Groups will meet in the **Upper Room** on **Thursday's** starting **March 1** and going through **March 29**.

Two meeting times are available— **10—11 a.m. or 7:30—8:30 p.m.**



**You are receiving this newsletter because you are a member of, or have expressed an interest in, this organization.** Please recycle this publication when you are finished with it. Thank you!

*Faith Messenger* is published monthly by Faith United Methodist Church, Waseca, MN. Article deadline is given in the newsletter and may vary every month. The publisher reserves the right to refuse submissions at any time.

For submissions, corrections and address updates, or to be removed from this mailing list, contact Tina England, Administrative Assistant at (507) 835-3167 or [faithwaseca@gmail.com](mailto:faithwaseca@gmail.com) or by mail at 801 Fourth Ave. NE, Waseca, MN 56093.

## Information To Keep You Connected

### Church Staff (835-3167)

Rev. Victor Waters  
Tina England, Office  
Bob Stephan, Custodian  
Barb Klampe, Choir Dir.

### Bulletin Board Coordinator

Linda Lohse 835-1917

### Church Building

Clair Voshell 835-4122

### Church Council

David Baldini 835-3697

### Communion Coordinator

Karen Norby 833-3556

### Education Coordinator

Linda Lohse 835-1917

### Fellowship Coordinator

Sandy Voshell 835-4122

### Flower Gardens

Wally Ruedy 835-7798

### Food @ Faith

Karen Norby 833-3556

### Greeter & Valet Coordinator

Marilynn Lau 833-1252

### Grounds

Bruce Stauffer 833-2979

### UMW & Church Historian

Janet Jones (507) 201-2023

### Kitchen Clean-Up Coord.

Karen Ferch 833-2515

### Lake Shore Video Coord.

Janet Welch 835-4678

### Liturgist Coordinator

Janet Jones (507) 201-2023

### Membership Care

Janet Welch 835-4678

### Memorials Chair

Bruce Stauffer 833-2979

### Missions Coordinator

Char Frankenberg 833-7489

### Newsletter & Bulletin

Church Office 835-3167

### Nominations Committee

Sherry Scholljegerdes  
835-4304 or

Mary Jane Stauffer  
833-2979

### Parish Nurse

Sherry Scholljegerdes  
835-4304

### Prayer Chain Coordinator

Deloris Asmus 835-1367

### Staff/Parish Relations

Paul Lohse 835-1917

### Trustee's Chair

Neil Fruechte 835-7006

### UMW

Roberta Walker 835-3044

### UM Youth Fellowship &

### Confirmation Coordinator

Pastor Victor 835-3167

### Usher/Acolyte Coordinator

Roger Walker 835-3044

### VBS Coordinator

Julie Blom 837-4046

### Worship Team

Pastor Victor 835-3167

*\*\* Looking for Project  
Volunteers!*

### Welcoming Team

Pastor Victor 835-3167

*\*\* Looking for Project  
Volunteers!*

## Plug-In!

give us a  
call & get  
involved!



**Call Us !**

## UMCOR Updates

### US: CLEANUP IN NEW JERSEY

The tireless work of United Methodist volunteers and UMCOR to provide assistance in the wake of Hurricane Irene has been recognized in New Jersey. UMCOR recently received a letter of commendation from the State of New Jersey. The letter notes UMCOR's contributions in the recovery through volunteers and support.

You can help families recovering after a disaster by volunteering and giving to US Disaster Response, UMCOR Advance #901670.

### ALABAMA: VOLUNTEERS CRITICAL TO RECOVERY

Even with a firm disaster response plan and well-trained personnel in the North Alabama Annual Conference, no one could anticipate the enormous response that would be required when 62 tornadoes struck the state on April 27, 2011. Volunteers held the key to the task ahead.

More than 70 early response teams from both in and out of state immediately responded to the needs of Alabamians with damaged or destroyed homes. Six months later, North Alabama continues to host hundreds of volunteers; nearly 800 volunteers have already visited the state with the North Alabama Conference Disaster Recovery Team to help rebuild.

Recovery continues! Support UMCOR's efforts to help Alabama and other communities rebuild after disaster by giving to US Disaster Response, UMCOR Advance #901670. Also, consider volunteering your time to help with recovery.

### GLOBAL: WORLD WATER DAY, March 22

Use World Water Day on March 22 as an opportunity to learn and share with others about water issues around the world.

At Old Mutare Hospital, a United Methodist



Hospital in Zimbabwe, access to clean water is a constant struggle. Expectant mothers must cook their meals in an outdoor kitchen and fetch water from one of two wells on the hospital grounds. When it is time for mothers to deliver their babies, nursing staff rely on a bucketful of water and an UMCOR birthing kit. Zimbabwe still faces emergency humanitarian challenges in the form of water-related diseases like cholera, food shortage, and limited access to basic services.

Give to support UMCOR's water programs, Global Water and Sanitation, UMCOR Advance #3020600.

### RELIEF SUPPLIES: SCHOOL KITS NEEDED

UMCOR and partner International Orthodox Christian Charities (IOCC) have been helping school children in the Gaza Strip by supplying them with school kits. Last year IOCC, working with local partners, distributed nearly 16,000 UMCOR-donated kits to children in four of the five governorates in Gaza.

The kit ministry continues in 2012. Some 35,000 kits already have been committed to Armenia and Georgia, and additional shipments are planned for Haiti and South Sudan. Eager students around the world are happy to receive blessings from UMCOR in the form of pencils, crayons, paper, and other necessary items to assist them in their learning.

Your help is needed to provide hope in the form of a school kit to children like those in Gaza. Lend your support to help our depots replenish their school kit supplies. You can give toward the purchase of these items by giving to Material Resources, UMCOR Advance #901440. The cost of one school kit is about \$11.00.

### MYANMAR: CYCLONE NARGIS

The people of Myanmar (Burma) are still

*(UMCOR Continued on Page 15...)*

## Prayer Chain Updates...

To better keep in touch with our Faith Family, and in an effort to get more of us involved in the Prayer Chain Ministry, we are expanding our notification methods. We now have a Facebook group and are adding an e-mail component to our Prayer Chain. To protect people's privacy, you must opt-in to participate.

If you **currently** are on the Prayer Chain **phone tree** list, and do NOT want anything to change, just keep doing what you do, and accept our thanks for being involved! A special Thank You to Deloris Asmus for heading up the Prayer Chain Ministry and continuing her work on this valued project!

If you would like to be added to the Prayer Chain, or change how you are noti-

fied, please indicate your preference for contact. You may choose more than one way to be contacted. If, at anytime, you change your mind, just let the Office know what you want changed.

If you have any questions or concerns about these changes or have ideas to improve our outreach, please let Pastor Victor know.

We are looking for help, once things are set up...

- Volunteer to manage e-mail list and send e-mails upon notification.
- Volunteer to manage Facebook group and post prayer requests upon notification.

**Share the power of prayer!**

### Please sign me up - Faith Prayer Chain Ministry!

*Complete, Clip and return this sign-up sheet to the Church Office.*

MY NAME: \_\_\_\_\_

Please add me to the **Phone Tree List**. I understand that I may be asked to call another person on the phone tree as part of this ministry. Use this phone number to contact me for this ministry: \_\_\_\_\_.

Please add me to the private **Facebook Group**—Faith Prayer Chain.  
*\*\* You must first "friend" Faith UMC in Facebook, then send a request from within Facebook to join the group.\*\**

Please add me to the **E-mail Contact List**. Use this E-mail address to contact me for this ministry:  
\_\_\_\_\_.



## Common Table Highlights

### Camping and Retreats future

Minnesota United Methodist camps and retreats will take place at Northern Pines Assembly Grounds (Park Rapids) and Koronis Ministries (Paynesville) beginning in 2013, the Retreats and Camping Ministry Team has determined.

An earlier determination was that the camping ministry's most effective role in the overall Minnesota United Methodist mission is to provide faith-nurturing classic residential camps for youth and children. Camps and retreats for special activities or other ages would be secondary priorities. Property analysis from an independent consultant led RCMT to base all its programs at these two sites.

"We've discovered we can't afford to own five properties and lease one," said Rocky Wilson, director of retreats and camping ministries. "The overhead cost is too high and revenue is not meeting the cost. We need to let go of some property so we can continue this ministry into the future."

The team is recommending that the Minnesota Conference divest of Camp Kingswood (Mound) and Star Lake Wilderness Camp (Pequot Lakes), to maximize resources for future camping and retreats ministry. The camping consolidation is part of RCMT's strategic plan to offer excellent children and youth ministries and operate a financially viable ministry.

### Wesley Center developing plans

A 12-person board is proposed to oversee a multi-use plan for the Wesley Center, the building which formerly housed the Wesley United Methodist Church faith community in downtown Minneapolis, Dennis Alexander, director of Minnesota Conference urban and multicultural ministries, reported.

The center's purposes would be to preserve a national landmark; house ministries like new faith communities, weekly community meals, employment training, and Twelve-Step meetings; and provide space for community meetings, performances,

education, and more.

New Harmony United Methodist Church and Twelve-Step groups already meet in the building. Representatives from Council on Administration and Finance, Board of Trustees, and Congregational Development Ministry Team will discuss the proposal before sending it on to the Common Table, Board of Trustees, and others who may have a role in making the decision about this building's use and ministry deployment.

### 2013 budget request below ceiling

Common Table voted to affirm a 2013 Minnesota Conference budget of \$6,298,788. This request relies on estimates received on Feb. 2 for General Church apportionments. General Church apportionments will be confirmed after General Conference meets April 24-May 4 and approves a denomination-wide budget. This request is below the ceiling limit, or maximum, set by annual conference session and is lower than the 2012 budget.

### Shared giving is declining

Minnesota United Methodists' contributions toward their shared mission and ministry fell in 2011 to \$320,000 less than their 2010 giving, reported Barbara Carroll. The apportionment receipt rate for 2011 came to 84.2 percent of the total apportioned to the churches—as opposed to the 86 percent of recent years. Apportionment receipt rates had steadily come to close to 86 percent most of the year; remittances decreased significantly in December.

### Decisions facing General Conference

"There is a lot of hope invested in the 2012 United Methodist General Conference," said Bishop Sally Dyck of the upcoming denomination-wide gathering of policy-making, worship, and celebration. She highlighted these decisions facing the international church body of 1,000 dele-

*(TABLE Continued on Page 14...)*





(...TABLE Continued from Page 13)

gates, which meets every four years: organizational changes that would streamline the board structure that governs the denomination's boards and agencies, establishing a role of non-residential bishop, changes to the deployment and credentialing of clergy, a covenant to continue work toward making the church in the United States a central conference with equal (rather than dominant) status with United Methodist bodies around the world, and social justice issues.

### **Board Governance**

The Common Table has been examining a board model for policy governance. Cindy Gregorson, Minnesota Conference director of ministries, reported that a small group researching such a model has discussed some foundational concerns. Under board governance, Gregorson said the board becomes a leadership team, gains clarity about where to go and how to get there, is more focused on outcomes, and grants freedom to those taking action toward the outcomes.

Conference board functions are now divided among Council of Finance and Administration, Board of Trustees, and the Common Table, which work independently of each other.

Next meeting: The Common Table next meets on April 12.

## **Take Your Whole Family to Camp this Summer!**

**Koronis Ministries** near Paynesville:

Red Rock Camp June 17-23 led by Rev. Paul Marzahn

Family Camp Aug. 6-12 led by Curt & Pat Moore

Labor Day Weekend Retreat Aug. 31-Sept. 3 led by Barb Rosene and Mike Schow

**Northern Pines** near Park Rapids

June 17-23 led by Judy & Kurt Lofffield

July 15-21 led by Keith & Cheryl Broady

July 29-Aug. 4 led by Pete & Donna Krouss

**KoWaKan** near Ely

Family Camp July 1-7 led by Gordon & Melissa Deuel

To see all the camps go to [www.campminnesota.org](http://www.campminnesota.org).

### **Want to do your own thing?**

Please email the individual camps for information about availability and rates.

Star Lake Wilderness Camp:

[starlakewildernesscamp@gmail.com](mailto:starlakewildernesscamp@gmail.com)

Camp Kingswood:

[campkingswood@frontiernet.net](mailto:campkingswood@frontiernet.net)

Decision Hills:

[decisionhills@koronisministries.com](mailto:decisionhills@koronisministries.com)

Koronis Ministries: [koronis@koronisministries.com](mailto:koronis@koronisministries.com)

Northern Pines: [nothernpines@unitelc.com](mailto:nothernpines@unitelc.com)

Camp KoWaKan: [kowakan@campminnesota.org](mailto:kowakan@campminnesota.org)

(...UMCOR Continued from Page 11)

working to recover from Cyclone Nargis, which killed more than 100,000 people in 2008. United Methodist Committee on Relief (UMCOR) partner Church World Service (CWS) has been working there to help in the recovery and to build local capacity to respond to future disasters.

The recent cease-fire has also created more opportunities for ongoing work in the country. UMCOR is supporting CWS in their efforts to provide training sessions that increase the skills in communities and to develop programs to meet local needs as well as prepare for future events.

Gifts to International Disaster Response, UMCOR Advance #982450, provide for disaster response and recovery worldwide.

**PHILIPPINES: INCONVENIENT MINISTRY**

For more than a year, Angie Brancano, director of the Harris Memorial College program that is UMCOR and Global Ministries' local partner, has worked with the Dumagats to confront their isolation by creating sustainable communal and backyard farms, providing alternative learning classes, and establishing pure water sources, sanitation, and healthy living.

"This visit showed me that to be in ministry with the poor is to serve people who live in inconvenient places; who are ignored by most government and NGO services; who are shunned as different or inscrutable; whose traditional way of life is so challenged by contemporary values (especially the predominance of individual security over the common good) that they literally find themselves between a rock and a hard place with regard to livelihood, education, and health care, the basic elements of a successful life," writes Linda Unger in the UMCOR blog.

Help support the ongoing work of this program by giving to Comprehensive Community De-

velopment Project for Dumagat Communities, Advance #3021302.

**JAPAN: RECOVERING LIVES AND LIVELIHOODS**

UMCOR is partnering with Global Medic to provide assistance to the people in Miyagi Prefecture, Japan, which was heavily affected by last March's tsunami. While much of the rubble has been removed and the area has begun to rebuild, many have lost their livelihoods and are unable to provide for their families.

UMCOR grants are helping survivors to regain economic independence. Global Medic is working with local partner, HOPE-Japan, to support local fisheries and provide shelters for local businesses to warehouse supplies.

When you give to International Disaster Response, UMCOR Advance #982450 you support UMCOR's response to disasters such as the earthquake and tsunami in Japan.

**THANK YOU!**

**Did you...**

**Order Easter Lilies or Tulips?**

**Volunteer for something new?**

**Send in your Special Offering for ONE GREAT HOUR?**

**Bring cash for the Chili Cook-Off on March 18?**

**Mark your calendar for Lent Worship opportunities?**



## Faith United Methodist Church

*"The Church By The Lake."*

801 Fourth Ave. NE  
Waseca, MN 56093

Non-profit Org  
Postage Paid  
Permit 30  
Waseca, MN  
56093

### Change Service Requested

Phone: 507-835-3167  
Fax: 507-835-5400  
E-mail: [faithwaseca@gmail.com](mailto:faithwaseca@gmail.com)  
[www.faithwasecaumc.com](http://www.faithwasecaumc.com)

# Lenten Worship Schedule

DATE	TIME	PLACE	PREACHING
Wednesday March 7, 2012	Noon 7 p.m.	Christ Community First Congregational	<b>Faith UMC Hosting Lenten Lunch</b> Pastor Ron Brey—Nicodemus
Wednesday March 14, 2012	Noon 7 p.m.	Christ Community Evangelical UMC	Lenten Lunch—Soup & Bread Pastor Jon Schultz—Barabbas
Wednesday March 21, 2012	Noon 7 p.m.	Christ Community Faith UMC	Lenten Lunch—Soup & Bread Rev. Victor Waters—Pilate
Wednesday March 28, 2012	Noon 7 p.m.	Christ Community Evangelical UMC	Lenten Lunch—Soup & Bread All Pastors—The Roman Soldiers
<b>Maundy Thursday</b> April 5, 2012	7 p.m.	Faith UMC	All Pastors—Foot Washing Service
<b>Good Friday</b> April 6, 2012	Noon	Faith UMC	Rev. Victor Waters
<b>Easter Sunday</b> April 8, 2012	7 a.m. 7:45 a.m. 9:30 a.m.	Faith UMC	Rev. Victor Waters—Celebration! Easter Breakfast Rev. Victor Waters

