

Inside this issue:

The Wonder of Advent	1
Announcements & Prayer Requests	2-3
Stewardship Drive	4
Nurse's Notes Haiti Revisited	5
UMW Update	6
Men's Club Minutes	7

Special Points of Interest:

- Monthly Meet-Ups, Page 2
- Christmas Word Search, Page 3
- Willie Mahler 100 Year Birthday, Page 6
- December Birthdays and Anniversaries included with Calendar
- Christmas Eve Worship Time, Back Page



**DECEMBER
2014**

*Faith United Methodist Church
"Engage, Equip, and Empower!"*

**Volume 2014,
Issue 12**

The Wonder of Advent

Advent is a wonderful season of the year full of great music, renewal of friendships, and reunions with family members that you may see only once a year. It is a busy season of the year where we are often consumed going from one activity to another. Somewhere in the middle of all these activities we need to give pause and remember why we celebrate Advent at all.

Advent comes from the Latin word *adventus*, meaning "coming". It is a season of anticipation as we look forward to celebrating the coming of God to dwell among us in the person of Christ, and a looking forward to His coming again as the Lord of Lords and the King of Kings.

We begin the Advent Season on November 30th and conclude it on December 24th at Christmas Eve.

This year we will look at the story of the coming of the Christ Child through the eyes of Mary and Joseph.

- November 30th The Teenager Who Lived In a Cave
- December 7th The Carpenter Whose Forefather Was a King
- December 14th The Visitor: A Celebration of Christmas in Song and Story
- December 21st The Tax Collector
- December 24th No Vacancy
- December 28th A Celebration of Carols
- January 4th The Great Aha!

This is a great time of year to invite friends and co-workers to come and hear the story, maybe for the first time.

Pastor Victor

Prayer Requests



Remember our church members & friends who are less mobile and are unable to join us as often as they would like, including:

Koda Living Community, Owatonna: Elaine Flathers

Colony Court Memory & Care Suites: Ann Swenson, Rosalind Peterson, Gerri Peterson

Colony Court: Millie Groh, Ardella Draheim, Nina Youngberg, Leona Quast

Lake Shore Inn: Florence Gutknecht, Hazel Henkensiefken, Don Lohse

Latham Place: Liz Corchran

Morrow Home, Sparta, WI: Marlene Rietfort

Oaklawn Health Care Center: Jim Keller

Tower Light, St. Louis Park: Darlene Lynch

Those who also need our prayers: Willie Mahler

Prayer Requests from Sunday Worship: Rodger and Vada Dahnert, Bruce and Deb Hering, Leona Quast, Jim Barber, Dave and Joann Eggness, Kookie, Jimmy Friedl, Deloris Asmus, Kelly Adams, Peter Fog, Patrice Waters

Winter Address Update

Earl and Mardell Jacobson

209 Nicklaus Blvd.
North Fort Myers, FL 33903

Wally and Betty Jane Ruedy

4308 West 125th St.
Savage, MN 55378-1416

MONTHLY MEET-UPS:

Elizabeth Circle

UMW Elizabeth Circle will meet on **Wednesday, December 17th, at 3:00 p.m.** in the **Lakeview Room**. Snacks will be provided by all members. Everyone is invited to share a reading during devotion time. Visitors are welcome.

Mary Circle

UMW Mary Circle will meet on **Tuesday, December 16,** for a potluck lunch, in the Lakeview room at **12 noon.**

Ruth Circle

UMW Ruth Circle will meet **Wednesday, December 17th, at 9:30 a.m.** The location is to be determined.

Men of Faith

Men's Club will not meet in December. The next meeting is January 8th at 6:30 p.m.

Faith Crafters and Stitchers

The group will **take a break** from meeting until January.

Rock the Cross

The beautiful new cross by our Clear Lake shore is "Ready to Rock!" Feel free to bring field stone to Faith United Methodist Church and place it or them at the base of the cross. Some of you may wish to ask others to help you carry the stone. This is your personal contribution to the cross!

Collectors' Showcase

Looking ahead...in early March, our UMW will sponsor an event that has proven very popular in past years, The Collector's Showcase. We decided it would be wise to issue an invitation well in advance so collectors have plenty of time and opportunity to plan the display of their treasures. Many and varied have been the previous collections, making for interesting and enjoyable shows as well as generating great conversations as people browse and view. Please circle the date of Sunday, March 8, 2015 on your calendars and plan to display your favorite collection(s).

This fun event will also feature an all-church Potluck Brunch so we will be well-fed as well as entertained. More details will follow as the time draws nearer, so watch future Newsletters for more information.

Christmas Word Search

G	C	S	S	E	F	Z	Y
Y	I	S	L	B	E	V	Y
L	S	F	A	E	A	R	L
L	V	V	T	N	I	B	T
O	L	J	W	S	T	G	Y
H	M	I	E	G	G	A	H

baby
 gifts
 holly
 Santa
 sleigh
 tree



Hint: They all go diagonally

Stewardship Drive

On behalf of the Finance Committee of Faith United Methodist Church, I would like to express my sincere thanks for all of your support of the Special Ask, Bucket Challenge.

As of this writing, we are at over 80% of our Budget Goal and over 16% of our Apportionment Goal. As we look forward to 2015, it is comforting to know that our financial needs are being met and we can focus on the vision our church to Engage, Equip and Empower our congregation as we strive to bring the Word of God to the people of Waseca, MN.

We celebrated this at our potluck on November 16th and kicked off our 2015 Stewardship Drive. By now most of you have received our 2015 Stewardship letter with the details of our 2015 budget. Here is a brief overview of the main points of our 2015 budget:

The operating expenses for 2015 are approximately \$150,375. This represents about a 1.3% increase over our 2014 budget. In a time where the Social Security Cost of Living Adjustment is 1.7%, I think that keeping our budget increase under 1.3% is remarkable.

Budget Income for 2015

- Rent from Hansel and Gretel which was \$3,450 for 2014.
- Additional Rental Fees \$3,000
- Loose offerings and special donations approximating \$2,400

Pledges

- We are asking the members of our congregation to cover the remainder of the \$141,000 that we need to cover our 2015 budget.
- When we add our apportionments for 2015 to our 2015 Operating budget the total 2015 budget is 171,000.
- Our 2015 projection for the Capital Improvement Fund is \$25,000. This will include the \$9,000 needed to cover essential needs for 2014 and \$16,000 for the major projects reserve.

The goal of our Stewardship Drive is not just to keep the lights on, keep the roof on the building or balance the budget even though we need to do those things. Our ultimate goal is to fulfill our Vision Statement:

It is our heart and desire to engage the community of Waseca with the Gospel of Jesus Christ, equip those who respond to be the next generation of disciples of Jesus Christ, and empower them to go into the world as partners with God for the healing of the world.

I am confident that as we pursue the vision God has called us to pursue in our community He will supply all we need to see that vision become a reality. By pledging a part of our income to the needs of the church we are partnering with God to heal the world.

Pastor Victor

Roger Goetz

Finance Committee Chair

Nurse's Notes, Haiti Revisited (Nov. 7-15)

Each trip to Haiti is different and this one was surprisingly so. It started at the airport. American Airlines built a new facility and it was beautiful. When we left we didn't have to pay \$65 to get out of the country. Hooray!

When we arrived, four of us went to work right away. We did 80 HPV (Human Papilloma Virus tests, the cause of cervical cancer) at a Cap Haitian hospital.

On Sunday, we went to the Citadel. It was built in the 1790's at the top of a mountain. The Citadel was like a fortress, built in case the French returned. They didn't. It was a real steep climb. I opted for a horseback ride.

Monday the work started. The surgeries were fewer than last year, but more unusual, such as: a machete laceration, a knife wound with a collapsed lung (inflicted by her husband), and a foot amputation. There were many female surgeries and 2 babies by C-section. Meanwhile, I was doing cervical cancer screens. There were about 130 done in Limbe; when the MD's got a break they helped. Sadly, we saw 5 women with overt cervical cancer, inoperable. The only hope was to go to Port au Prince for radiation. I am not sure that would change the outcome.

The low point of the trip was a 32-year-old woman. She had come in for the screen. She was faced with the news that she had inoperable cervical cancer (the leading cause of cancer for women in Third World countries.) It was especially hard because she had 5 children at home.



The high point was a woman who had a fibroid, removed by our team, a few years ago. She gave birth by C-section. When the baby was put next to her face, the tears trickled from the corner of her eyes. This will probably be her only child as she is 40 years old.

A baby was left at the hospital, abandoned. He's about 6 months old, very malnourished. He's drinking milk now and is being cuddled at every chance. He was named John by the doctor who found him.

It was quite a trip. Did I mention, the temperature hovered in the mid 90's and the humidity was about the same? Luckily, I had a fan in the exam room.

Thank you for your support and prayers. They carried me through.

Blessings, Your Parish Nurse

Sherry Scholljegerdes, RN

PS In January, after church, I'll do a PowerPoint of the photos from Haiti 2014.



UMW Update

United Methodist Women would like to thank everyone who participated in the Fall Bazaar, whether it was by donating, volunteering, or praying---Thank You. It was the BIGGEST AND BEST by far.

Anyone and everyone are invited to be a United Methodist Women member. Yes, even men can belong to UMW. Also non-Methodists can be a member. Are you wondering what we do, beside donate to missions? Locally we have given and helped in many projects.

Faith UMW has four active "Circles". A "Circle" is a group of members, meeting each month either for the convenience of time or common interest. **Ruth Circle** meets in the morning, third Wednesday of each month. They meet at homes of the members. Ruth Circle has our members with the most years of membership. **Elizabeth Circle** meets at 3:30 p.m. each month either at members' homes or in the Lakeview Room at church. Elizabeth Circle was meeting in the evenings to accommodate working women. Many of the members are retired, so they changed the meeting time. **Mary Circle** meets at 2:00 p.m. on the third Tuesday of the month. They also meet at either members' homes or Lakeview Room. At our meetings we have refreshments (of course), short business meeting, a program or devotion. Also, the **Crafters and Stitches** is a Circle of women who meet the third Thursday of the month at 3:00 p.m. They work on crafts for the bazaar or themselves. It's great to meet with women in the fellowship of Jesus Christ. We have a number of women who are not members of a Circle, but are members of the United Methodist Women. At Fall Bazaar time it seems as though everyone is a member helping where it's needed. Thanks so much for all you do for United Methodist Women.

HAPPY 100 YEARS YOUNG!

Willie Mahler is going to have her 100th birthday on December 10th. A card shower would be appreciated.
Thank you.



Men's Club Minutes

Les Wells called the meeting to order at 6:30 p.m. with a prayer. Roger Walker gave an excellent devotion on how the Holy Spirit helps things fall into place in our life. He gave the Cross Project as an example, as a few months ago it didn't look like it would happen, and then all of a sudden through help from the men in church it has happened and is completed. Others also gave examples how the Holy Spirit has helped in their lives.

Roger Walker said that the valet service will be up and going again this year. Next Sunday there will be a sign-up sheet at church so people can sign up and volunteer. We discussed that there should be a meeting for the valet volunteers so that they know exactly what to do. This service will start on December 7. Roger will head it up but was told that he wouldn't have to be a valet. He will put up the signs every Sunday at 8:30 a.m.

Peter Fog brought up a project to collect donations to feed the needy children of America. He said that he receives several letters on this. Ron Terrell also discussed the Wounded Warrior Project and wanted Christmas cards sent to a soldier in the hospital.

Roger said he felt that it was more important to give himself instead.

We discussed how to get more men to attend the meetings. Paul Lohse suggested to skip the December meeting due to so much going on in December, so our next meeting will be on the second Thursday in January. Clair Voshell will host it with treats and Paul Lohse will give the devotion.

Those in attendance were Ronald Terrell, Roger Walker, Clair Voshell, Leslie Wells, Peter Fog, and Paul Lohse.

All men of the Church are invited to these meetings so that they can provide their input on items that the Men's Club could be doing.

Leslie W. Wells, Men's Club Moderator



Faith United Methodist Church

"Engage, Equip, and Empower"

**801 Fourth Ave. NE
Waseca, MN 56093**

Phone: 507-835-3167

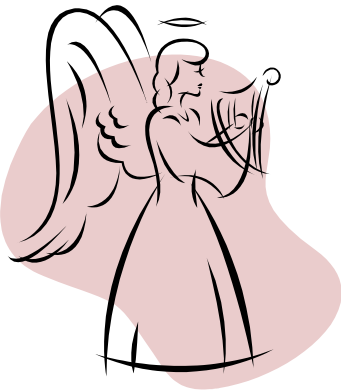
Fax: 507-835-5400

E-mail: faithwaseca@gmail.com

www.faithwasecaumc.com

Change Service Requested

Non-profit Org
Postage Paid
Permit 30
Waseca, MN
56093



Join us for
Christmas Eve Service

**Wednesday, December 24th
At 4:30 p.m.**

Bring a friend!

